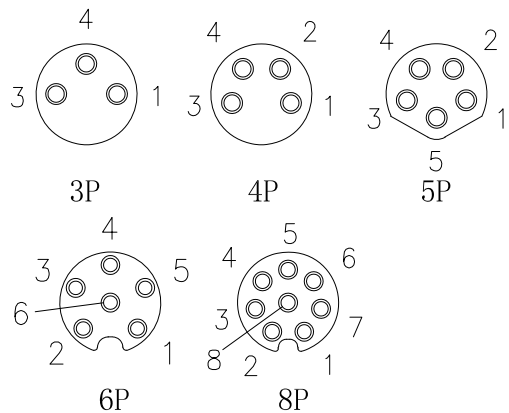
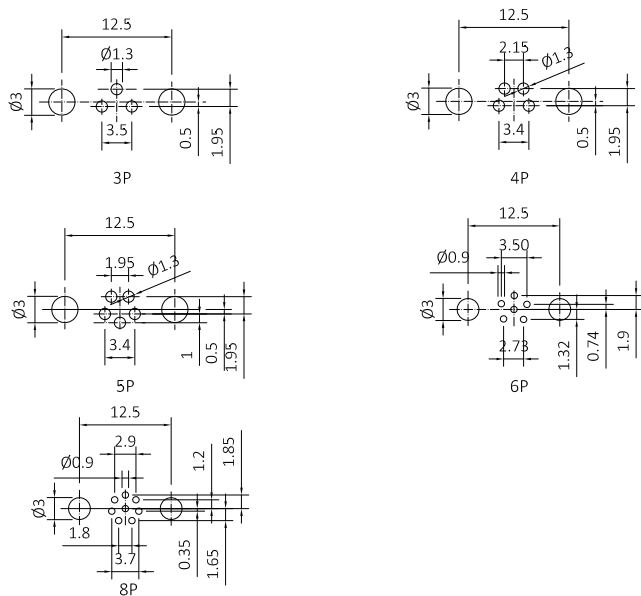


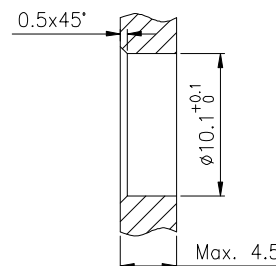
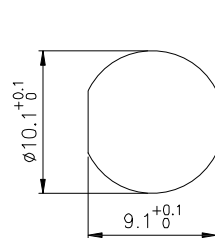
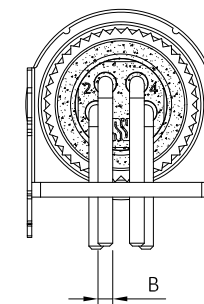
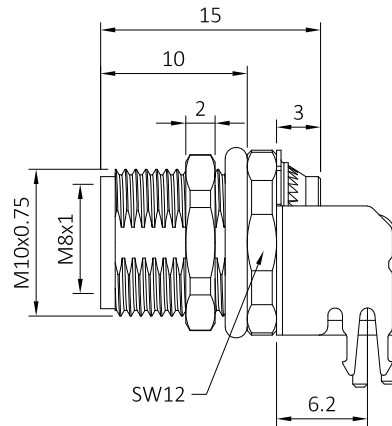
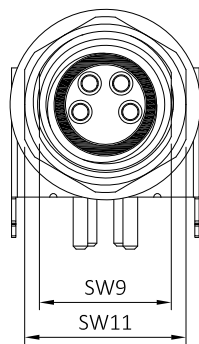
PIN layout



PCB Layout

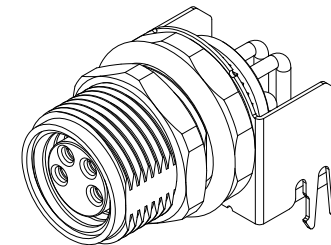


8	O-Ring	Rubber, green	1
7	Location-plate	PA66,Black	1
6	Contact	Brass; Gold-plated	3~8
5	Shielded	Brass; Gold-plated	1
4	O-Ring	Rubber, Black	1
3	Nut	Brass; Nickel plated	1
2	Body	M8 female Shell, Brass; Nickel plated	1
1	Housing	PA66,Black	1
No.	PART NAME	DESCRIPTION	Q'TY



Recommended
Panel cut-out

B:
2~5P: Ø1mm
6~8P: Ø0.6mm



Technical specifications:
1. Rated voltage/current:
3/4pin:60V/3A
5pin:30V/3A
6/8pin:30V/1.5A
2. Degree of protection:IP67
3. Temperature range:-25°C~+80°C
4. Mating cycles: ≥ 500

-TOLERANCES-
UNLESS OTHERWISE
SPECIFIED

UNLESS OTHERWISE SPECIFIED
TOLERANCES FOR MILLIMETERS ARE:
0.5 - 8mm ± 0.20mm
8 - 30mm ± 0.25mm
30 - 120mm ± 0.30mm



RENHOTEC GROUP



PART DESCRIPTION:
R/A M8 female Connector

Appr: JIM.KING

P/N: RHT-634-3282

Check:

Date	Scale	Unit	Type	Page
------	-------	------	------	------

Draw: DING

2023.05.05	Free	MM	Z	1/1
------------	------	----	---	-----