



	X	Y
1	-1.75	0
2	-	-
3	1.75	0
4	0	1.75



	X	Y
1	-1.70	-0.50
2	-1.08	1.45
3	1.70	0.50
4	1.08	1.45



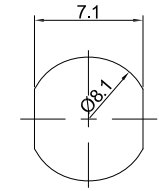
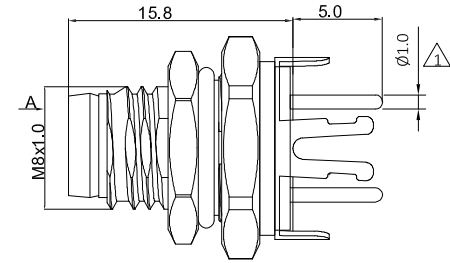
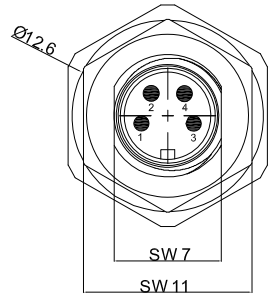
	X	Y
1	-1.70	-0.35
2	-0.975	1.45
3	1.70	-0.35
4	0.975	1.45
5	0	-1.35



	X	Y
1	-1.37	-1.32
2	1.37	-1.32
3	1.75	0.74
4	0	1.90
5	-1.75	0.74
6	0	0

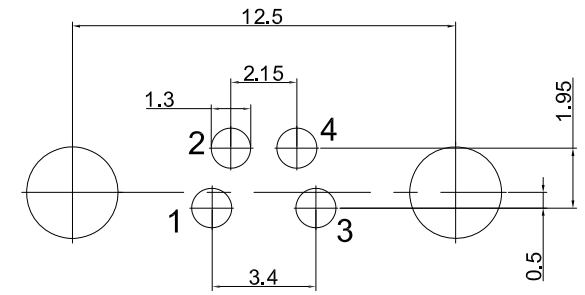


	X	Y
1	-0.90	-1.65
2	0.90	-1.65
3	1.65	-0.35
4	1.45	1.20
5	0	1.85
6	-1.45	-1.20
7	-1.65	-0.35
8	0	0



Panel Cut-out Dimensions

	Rated voltage	Rated pulse voltage	Rated current	Contact resistance
	600V	800V	4A	≦ 3mΩ
	30V	800V	4A	≦ 3mΩ
	30V	800V	4A	≦ 3mΩ
	30V	800V	1.5A	≦ 3mΩ
	30V	800V	1.5A	≦ 3mΩ



PCB Layout

- Specifications:**
- IP rating: IP67
  - Ambient temperature: -40°C~+85°C
  - Pin material: Tin bronze - Au (gold) plated
  - Insulator material: PA 66

3	O-ring	Rubber	/	pc	1
2	Nut	Brass	Nickel plated	pc	1
1	Body	Brass	Nickel plated	pc	1
No.	Specification	Material	Treat	Unit	O'tv

-TOLERANCES- UNLESS OTHERWISE SPECIFIED	<b>RENHOTECH</b> www.renhotec.com		<b>RENHOTECH GROUP</b>			
	PART DESCRIPTION: M8 male, Panel Mount, PCB Type, Front fastened, with Earth Pin					
UNLESS OTHERWISE SPECIFIED TOLERANCES FOR MILLIMETERS ARE: 0.5 - 8mm ± 0.20mm 8 - 30mm ± 0.25mm 30 - 120mm ± 0.30mm	Appr:	JIM.KING				
	Check:	Date	Scale	Unit	Type	Page
	Draw:	2022.06.30	Free	MM	Z	1/1